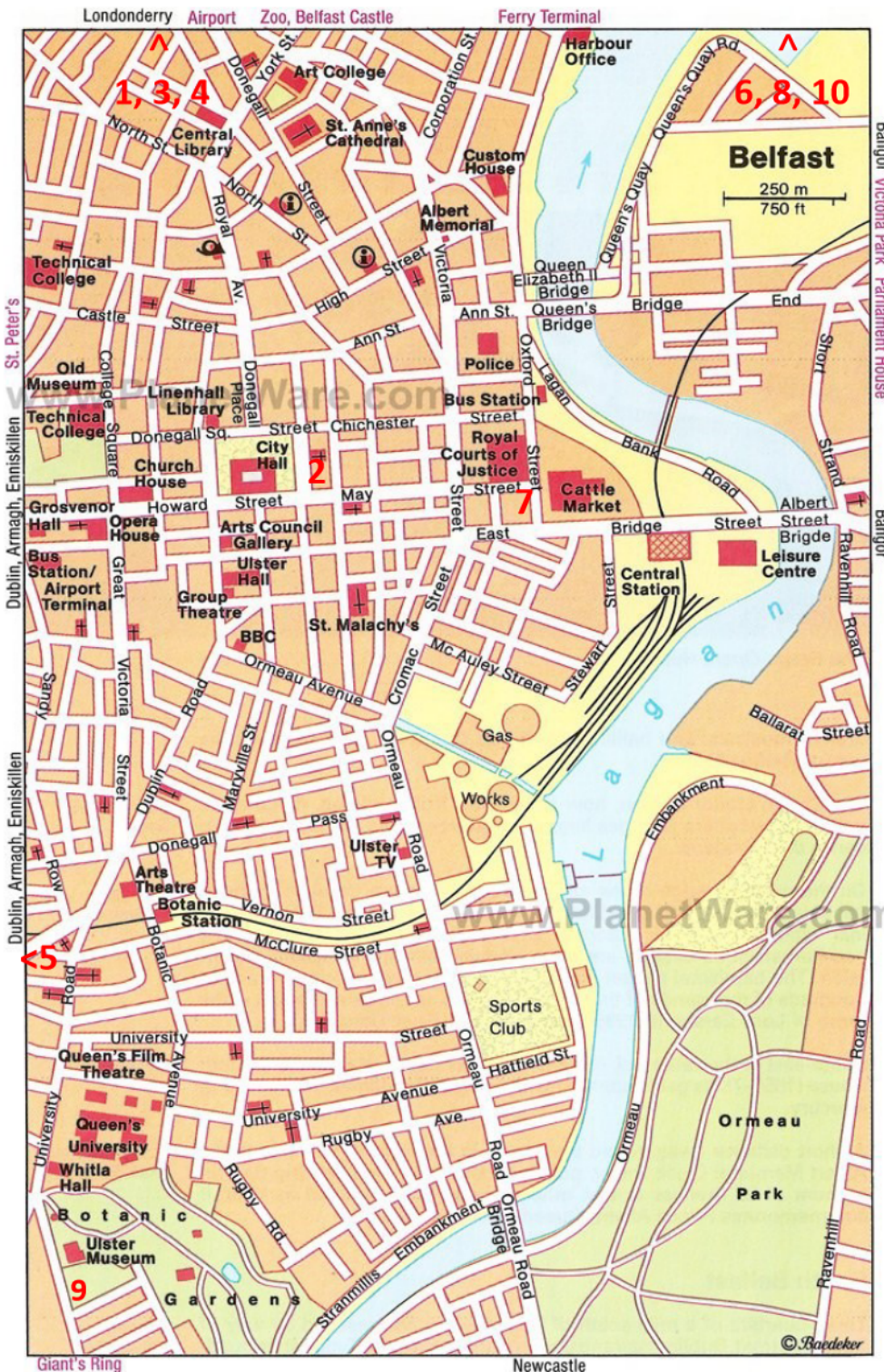




Belfast

The second largest city on the Island of Ireland and the capital of Ulster. Best remembered as the birthplace of the ill-fated RMS Titanic. In addition to the many city sights, Belfast is an ideal base from which to discover the recently launched “Embrace the Giant Spirit” theme of Northern Ireland



1. Belfast Castle
2. Belfast City Hall
3. Crumlin Rd. Gaol
4. Giants Causeway
5. Hillsborough Castle
6. HMS Caroline
7. St George's Market
8. Titanic
9. Ulster Museum
10. W5 at the Odyssey

1. Belfast Castle

Located in Cave Hill Park. The 4.5 mile woodland walk offers stunning views over the city. There is a restaurant and tavern in the castle.



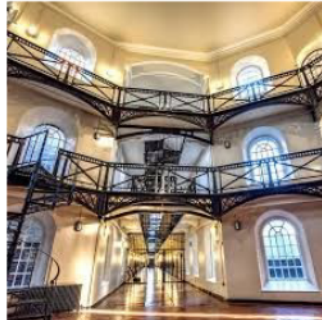
2. Belfast City Hall

Opened in 1906, by the Mayor, Viscount Pirrie, who was also the inspiration behind Titanic. Many of the City Hall finishes were copied on the liner.



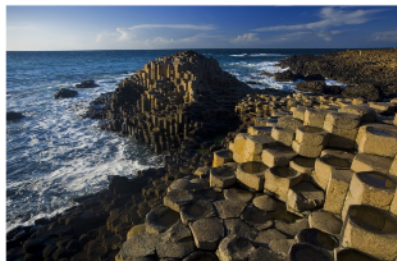
3. Crumlin Road Gaol

Opened in 1846, served as the city jail for 150 years. Now a museum, explore the building where 17 men were executed and discover the tunnel from the courthouse to the goal.



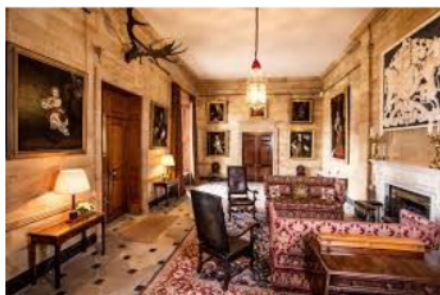
4. Giant's Causeway

World Heritage Site, 65 miles north of Belfast. Legend says it was created by the Irish Giant Finn McCool in his battle against the Scottish giant Benandonner.



5. Hillsborough Castle

Georgian House, 12 miles south of Belfast on the M1. The Queen's official residence in Northern Ireland. 100 acres of stunning gardens.



6. HMS Caroline

This light cruiser is the last surviving warship from the Battle of Jutland in 1916. Now a 5 star attraction discover what life at sea was like over 100 years ago.



7. St. George's Market

Named UK's Best Indoor Market in 2019. Open Friday to Sunday the electric atmosphere with live music, offers food, crafts and antiques.



8. Titanic Experience

Explore the shipyard on an electronic dark ride. Experience launch day, walk the decks as 9 interactive galleries bring the Titanic story to life.



9. Ulster Museum

FREE Museum tells the unique human story of Ulster and also takes you to all corners of the globe. Discover dinosaurs, Egyptian mummies and dive into discovery zones.



10. W5 at the Odyssey

Award winning Science & Discovery Centre. Permanent exhibits plus changing program of large and small scale temporary exhibitions. Daily program of live science demonstrations.

